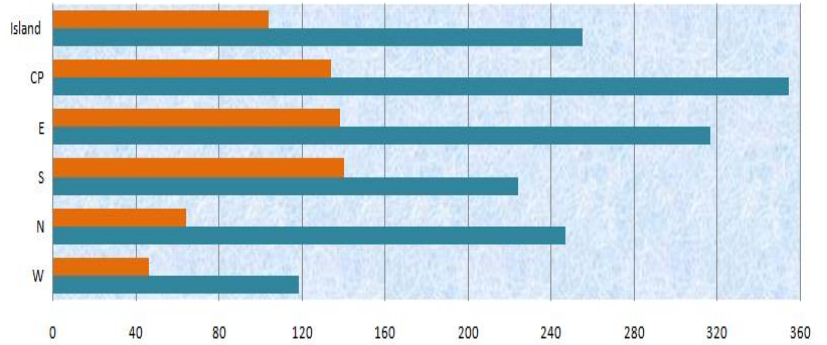


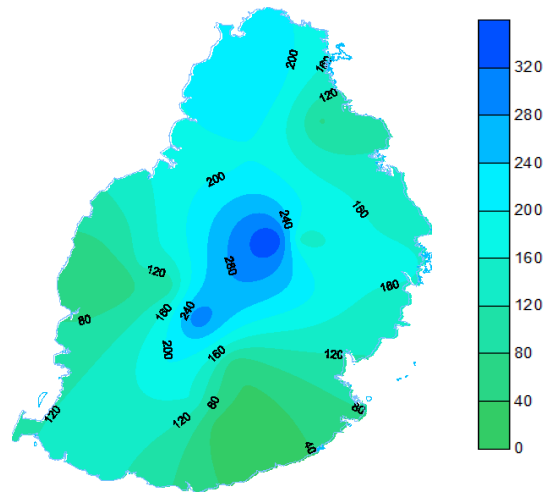
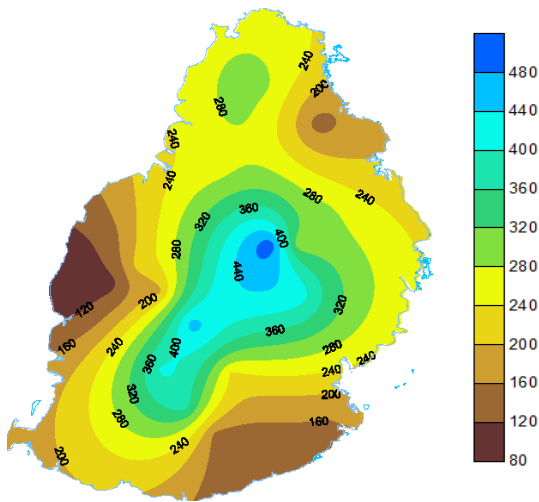
Mean Rainfall for 1-15 April 2019

Mauritius

Very wet conditions prevailed during the first fortnight of April 2019 with above normal rainfall amounting to 255 mm, representing 245 % of the long term mean for the period. Rainfall was in excess in all regions over the island. Some places over the Central Plateau recorded an excess of 360 mm.



	W	N	S	E	CP	Island
LTM (1981-2010) Rainfall (mm)	46	64	140	138	134	104
Actual Mean rainfall (mm)	118	246	224	317	354	255



Outer Islands

		Amount (mm)		
	Stations	Actual Mean Rainfall	LTM Rainfall	% of LTM
Rodrigues	Pointe Canon	35	82	43
	Plaine Corail	16	53	30
	Citronelle	42	107	39
	Agalega	20	81	25
	St Brandon	09	52	17

Below normal rainfall was observed at Rodrigues

Very dry conditions prevailed at St. Brandon and at Agalega

Ram Dhurmea
For Director
16 April 2019